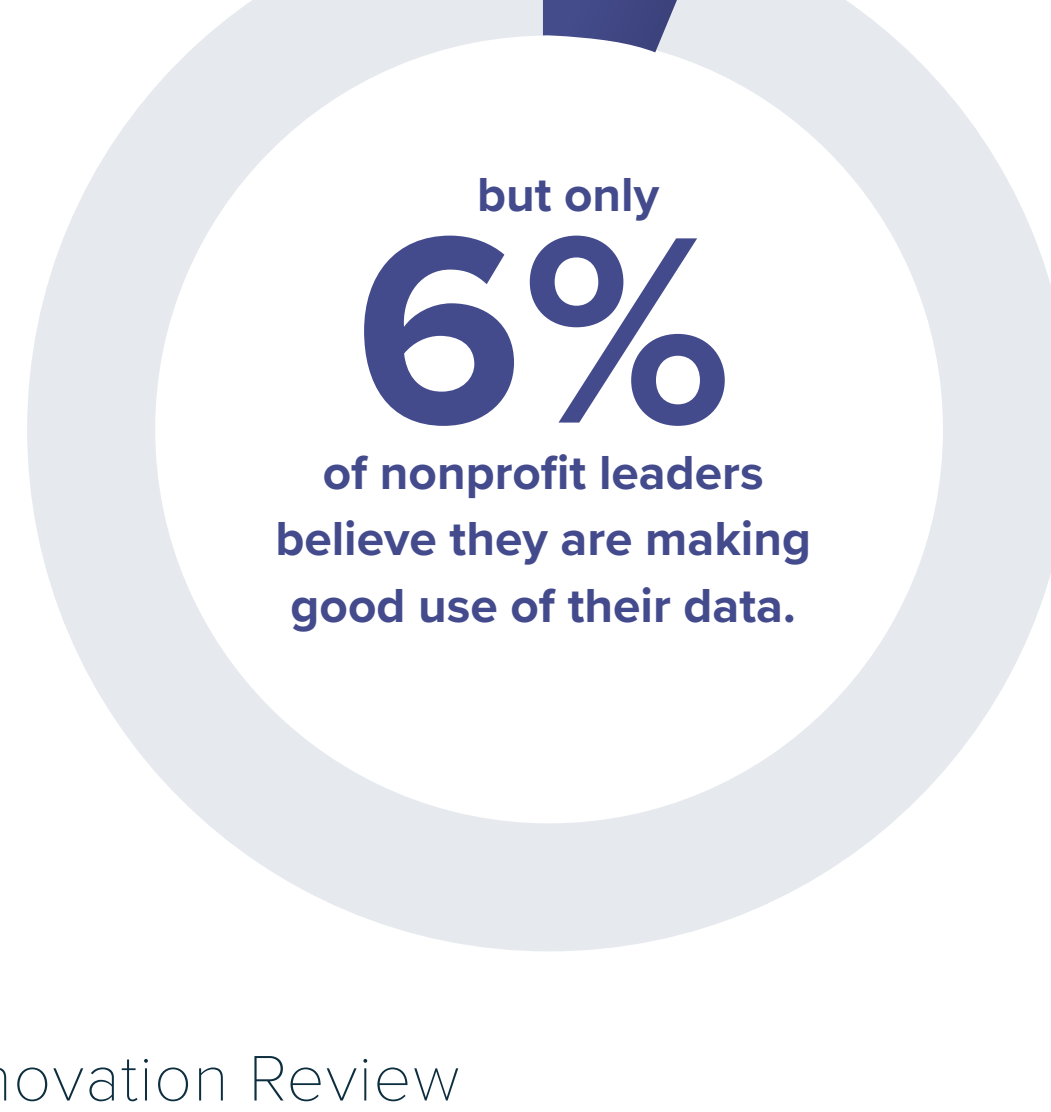




Back to the Basics: Breaking Down Data Concepts for Human Services Agencies

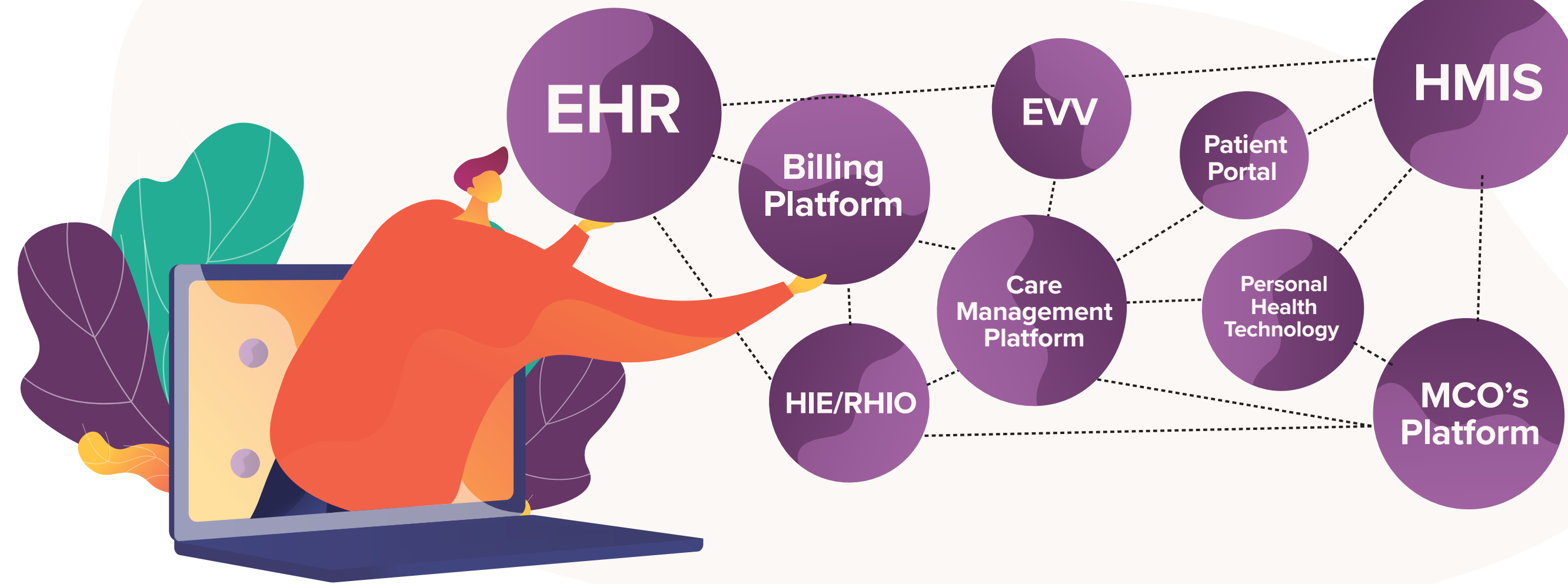
Nonprofits are collecting data, but they're not always making the most out of it.



*Stanford Social Innovation Review

But First, Where Does Your Data Live?

Your data should live in an ecosystem of secure healthcare technology.



What Can Data Analysis and Visualization Do For You?

- Support Grant Writing
- Report on Value Based Care
- Analyze Social Determinants
- Track Gaps in Care
- Improve Outcomes
- Enable Better Supervision
- Evaluate Programs
- Advocate for Policy
- Improve Funder Relations

Understanding Advanced Data Tools

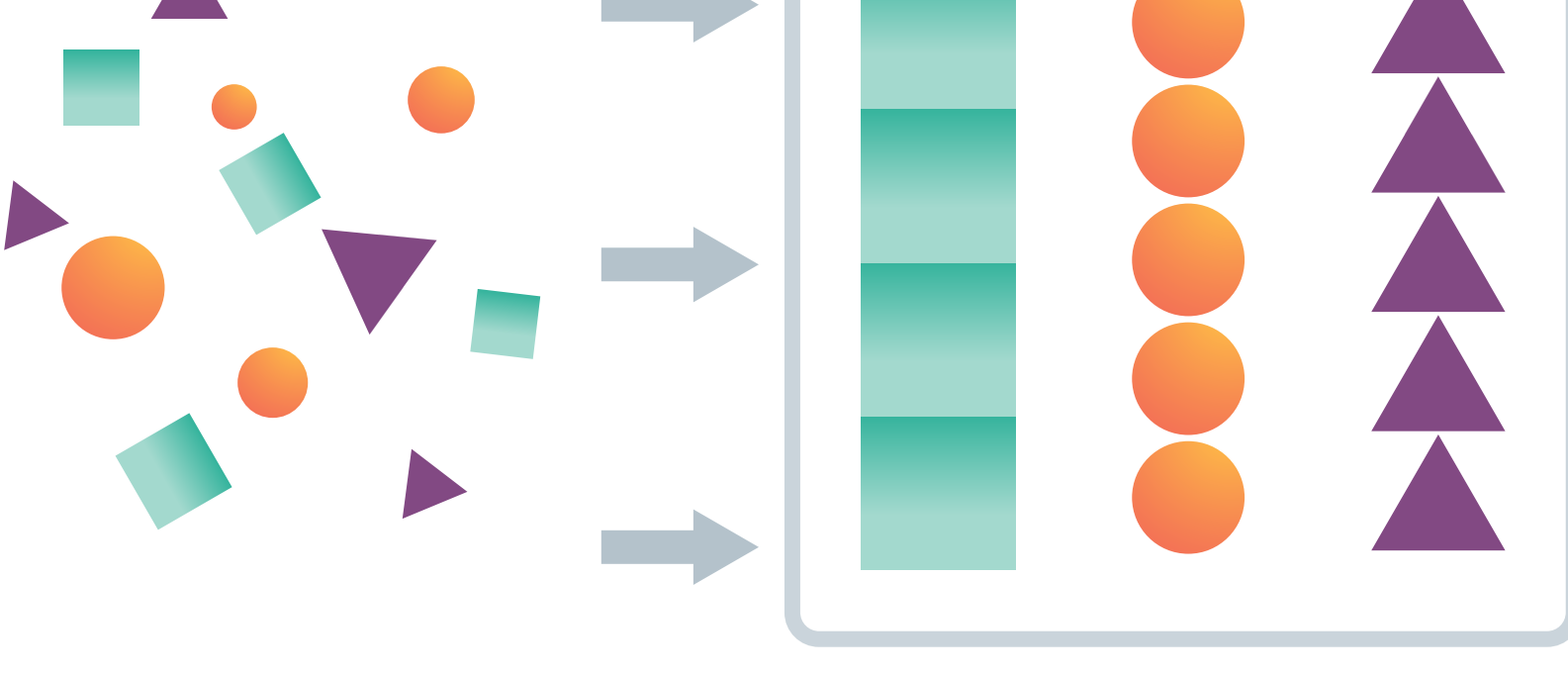
Behavioral health agencies are going beyond reporting, taking advantage of a new world of tools to understand their data.

Data Warehouse

Stores a large amount of organized data, accumulated from one or multiple sources.

How is it used?

Provides a single source of truth. From your warehouse, data can be exchanged, analyzed, and mined for deeper understanding.

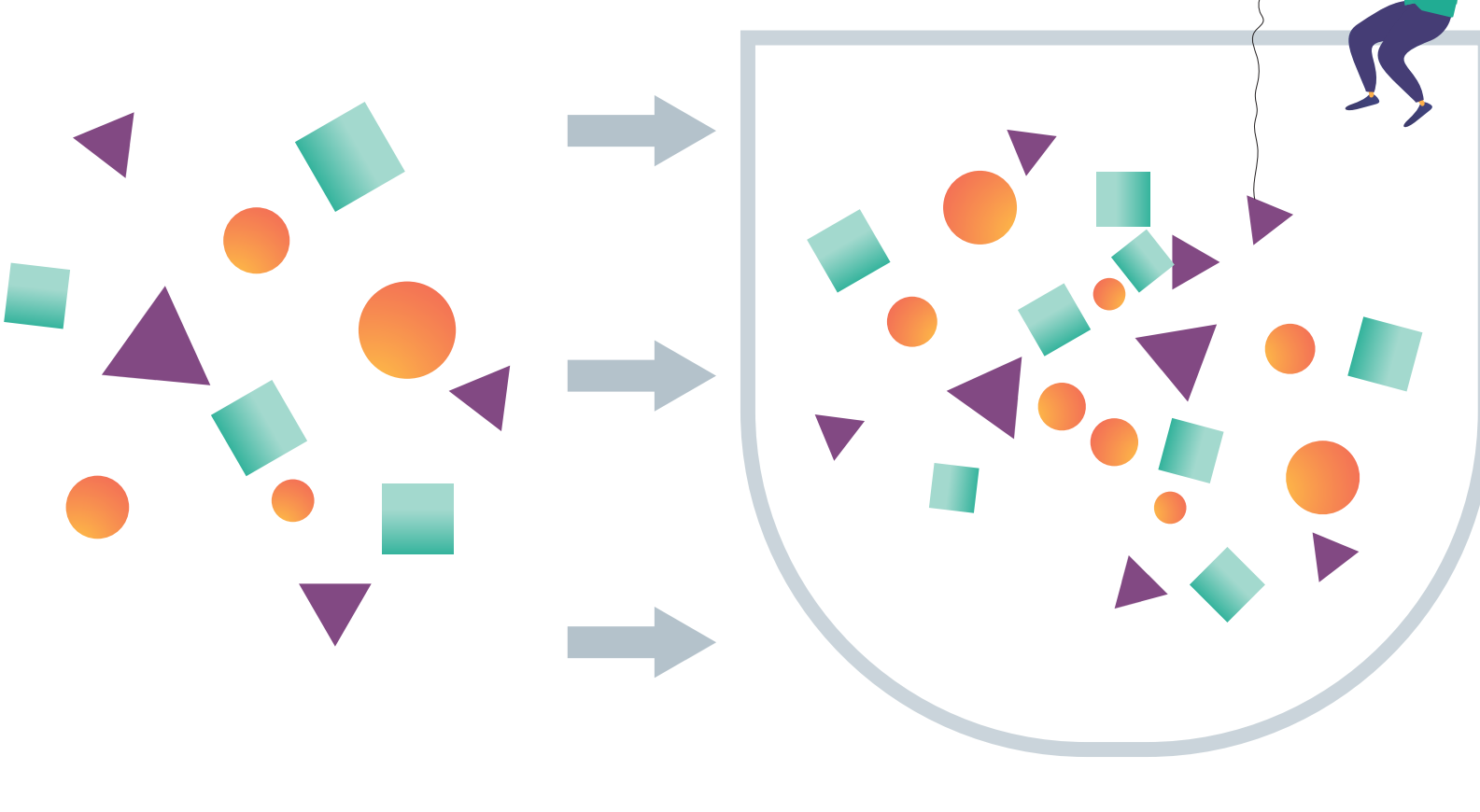


Data Lake

Stores a large amount of data from multiple sources. Data tends to be in a raw format, requiring technical expertise to extract.

How is it used?

Provides the data for research or social science initiatives.

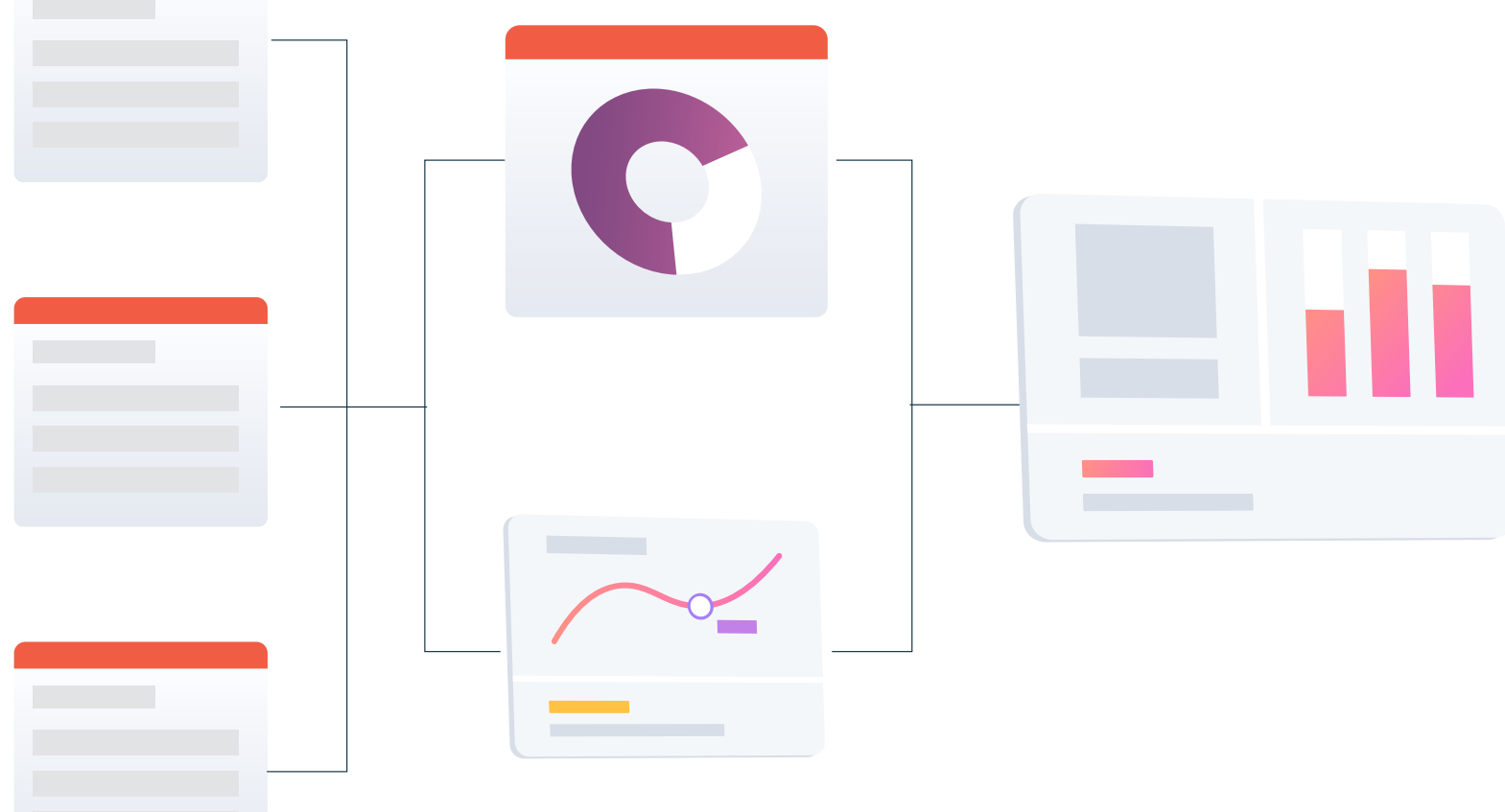


Data Modeling

Can be pictured as a flowchart that illustrates data entities, their attributes, and the relationships between entities.

How is it used?

Organizes information to serve business processes. Specifies characteristics of data elements used to process, store, and manage the data.

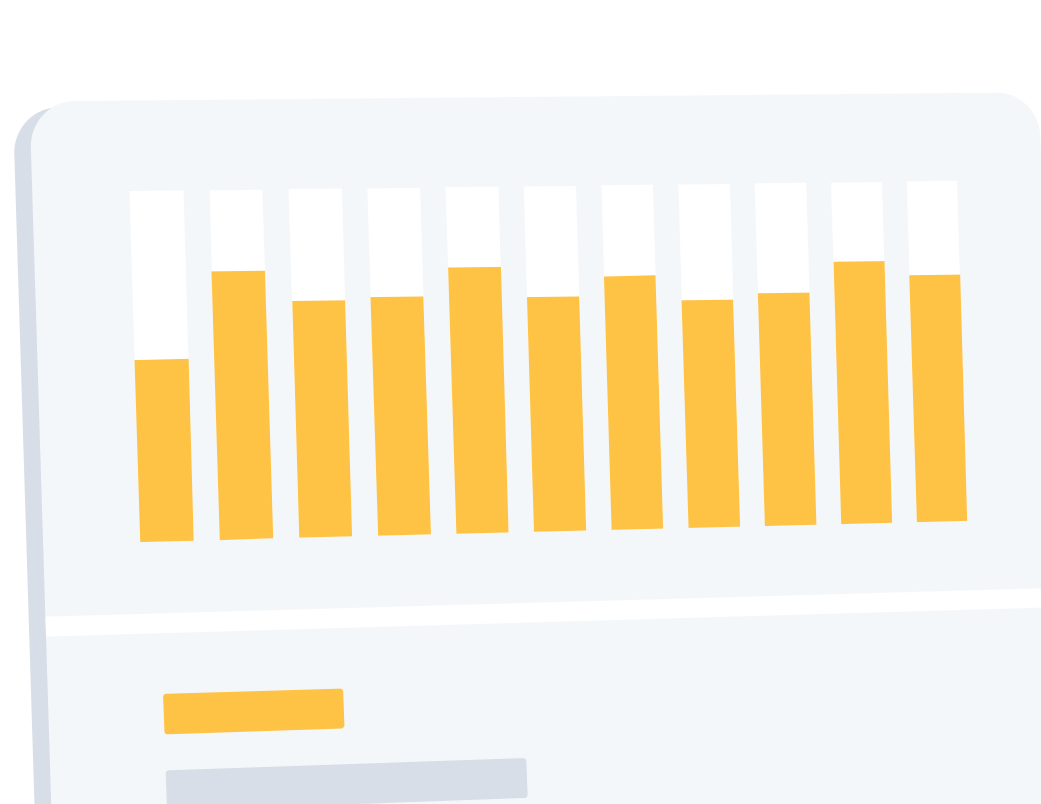


Data Visualization

Presents data in a user-friendly way with interactive graphs, charts, and other visual aids.

How is it used?

Makes data approachable and enables designers to solve business problems dynamically by creating dashboards.



The Ultimate Analytics Stack

Visualization

Dashboards and visualizations to measure your organization's goals: track gaps in care, service utilization, notes completion, and more.

Data Warehouse

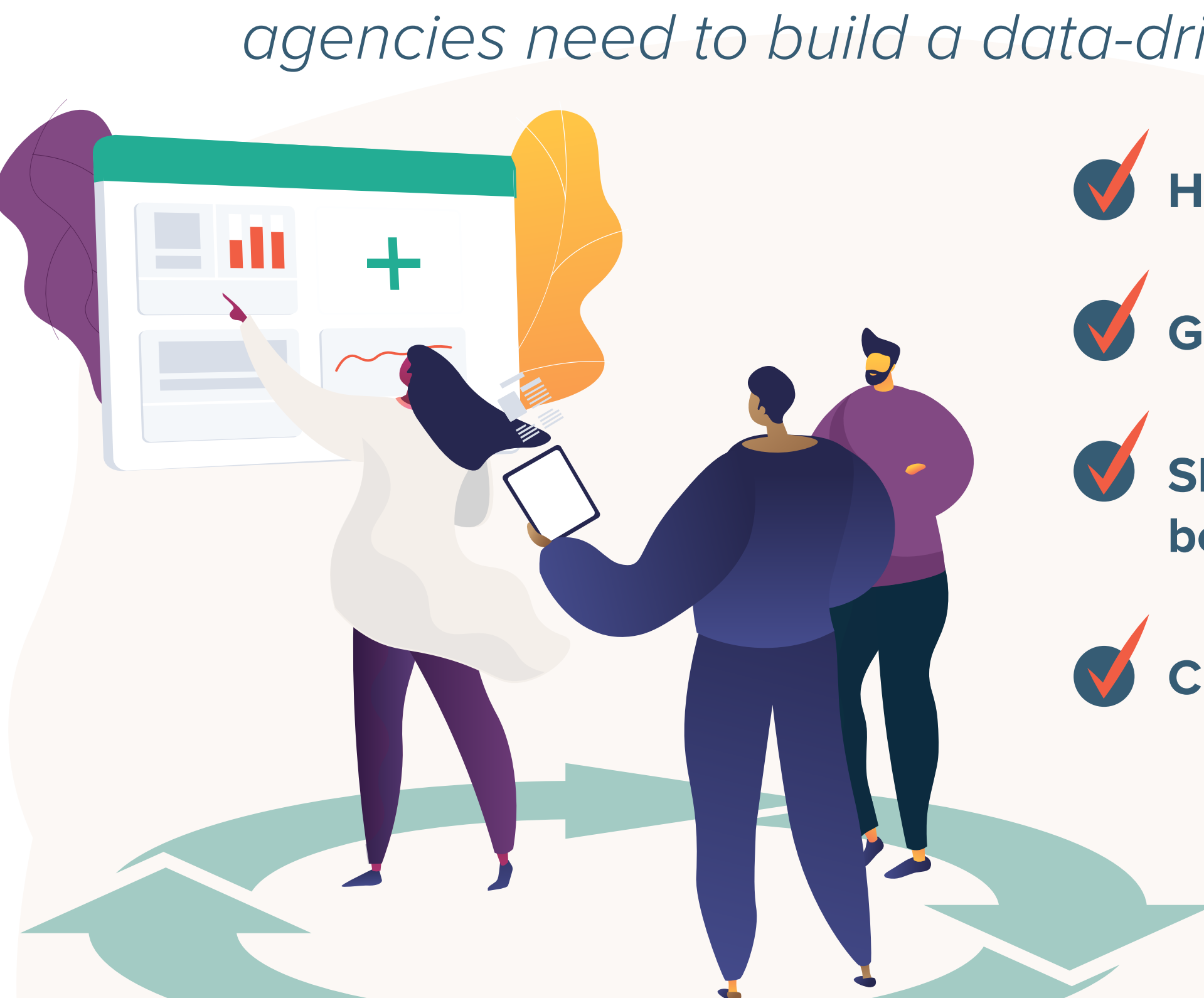
Extract data from your EHR and store it in an organized format for easy visualization and analysis.

Hosting

HIPAA-secure hosting of client data in your EHR and other software platforms.

How to Build Data Culture

To get the most out of their data, agencies need to build a data-driven culture.



- ✓ Have a champion
- ✓ Gain executive buy-in
- ✓ Show how data can benefit staff & clients
- ✓ Create cycles of feedback

“Being data-driven is a culture, not a process.”